



**1312 / 2012 Series**

**Applications:**

- Burners for fuel oil (preheated or not) and its mixtures, gas-oil, etc., with mechanical pressure atomizer, rotating cup, compressed air, steam, etc.
- It may be used with heavy fluids, steam and corrosive fluids.

**Main characteristics**

Normally closed and normally open.  
Lever activated direct acting. No minimum differential pressure to operate.  
Body: bronze, stainless steel, etc.  
Stainless steel needle type seats.  
Class **H** coils coated with glass fibre and insulating impregnation.  
Output cables for splicing.  
Interior use housing with an outlet for electrical connector.

**Options:**

- Explosion and / or weather proof housings.  
Suitable for heavy fluids, such as fuel-oil, heavy oils, steam and corrosive fluids.

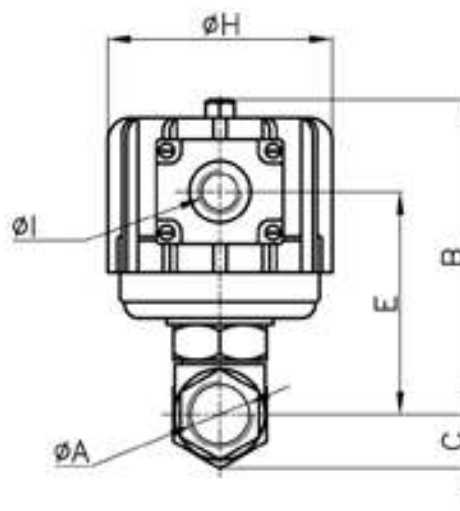
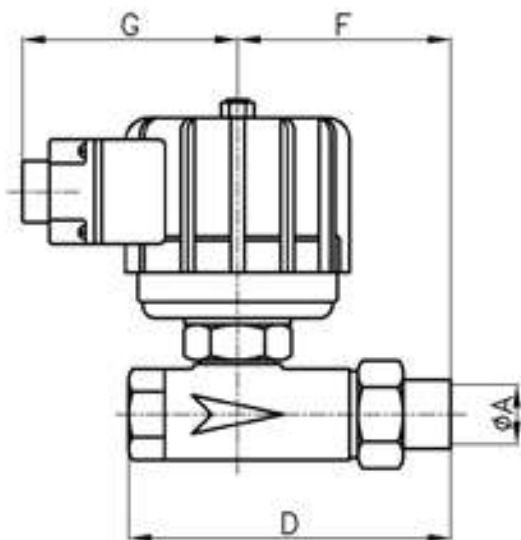
**Technical specifications**

**\*Advise:** when using direct current (DC), a 25% reduction on the maximum operating pressure differential is expected

Ø Piper ins.	Ø orifice		Flow factor		Δp * maximum		Maximum Temp.		Weight		Catalog N°.	
	mm	ins.	Kv	Cv	bar	psi	°C	°F	kg	Lb	Brass	AISI 304
<b>Normally closed</b>												
1/2"	5	0.20	0.60	0.7	21	300	155	311	3.4	7.5	2012BS504	1312SS504
3/4"	8	0.31	1.40	1.6	12	180			3.6	7.9	2012BS506	1312SS506
									2012BS806	1312SS806		
1"	11	0.43	2.50	2.9	6	90			3.8	8.4	1312BS808	1312SS808
							1312BSB08	1312SSB08				
<b>Normally open</b>												
1/2"	4	0.16	0.39	0.46	15	225	155	311	3.4	7.5	2012BS404NA	1312SS404NA
3/4"	5	0.20	0.60	0.7	12	180			3.6	7.9	2012BS406NA	1312SS406NA
									2012BS506NA	1312SS506NA		
1"	4	0.16	0.39	0.46	15	225			3.8	8.4	2012BS408NA	1312SS408NA
							2012BS508NA	1312SS508NA				

(\*) For steam at 10 bar

**General dimensions 1312 - 2012**



øA	B	C	D	E	F	G	øH	øI
R 1/2"	139	22	140	98	95	95	99	3/4"NF
R 3/4"								
R 1"	147	30	147	106	96			

Measurements: mm

øA	B	C	D	E	F	G	øH	øI
R 1/2"	5.47	0.87	5.51	3.86	3.74	3.74	3.90	3/4"NF
R 3/4"								
R 1"	5.79	1.18	5.79	4.17	3.78			

Measurements: ins.

**Coil characteristics**

Electric power supply	Coil type	Power W	VA (volt-amper)		Maximum temperature		Available tensions
			Inrush	Holding	° C	° F	
AC 50 Hz	SH46C	46	277	104	155	311	1
	S46H(*)	46	277	104	180	356	1
AC 60 Hz	SH46C	46	286	103	155	311	2
	S46H(*)	46	286	103	180	356	2
D/C	SH48C	48	48	48	155	311	3
	S48H(*)	48	48	48	180	356	3

1-(12,24,110,220,240)V 2-(12,24,110,120,220,240)V 3-(12,24,110,220)V

(\*) For steam at 10 bar

Options	Prefix	Suffix	Examples
Weather proof housing	<b>Y</b>		Y2012BS504
Explosion and weather proof housing	<b>Z</b>		Z2012BS506
NPT connections		<b>T</b>	2012BS504T

**Recommendations for installation**

Mount the valve **only** over horizontal pipeline with the coil upright.