



Applications:

- Autoclaves. Steam irons.
- Condensation purge in air systems.
- Coffee machines. Fryers.

Main characteristics

Normally closed and normally open.
Direct action. No minimum differential pressure to operate.
Forged brass, nickel-plated forged brass body.
BSP or NPT threaded connections.
Stainless steel blade type closure PTFE seats.
The straight passage prevents pressure drops and turbulence caused by the fluid's changing direction as it is the case with conventional valves.

Options:

- Explosion and weather proof housings.

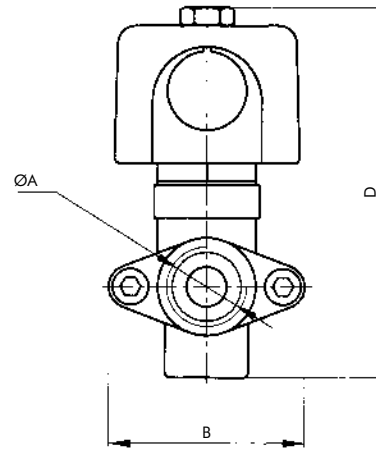
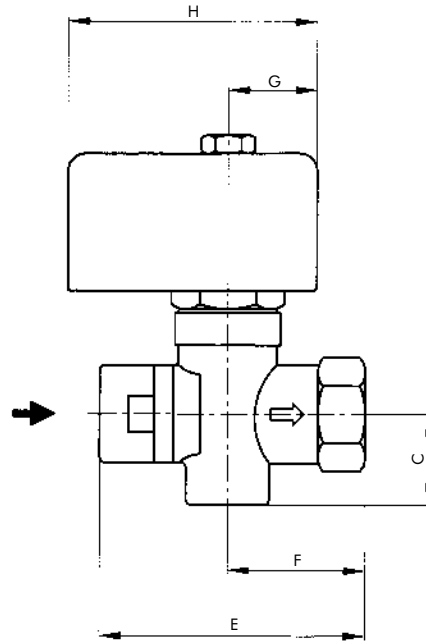
Important:

This series is not available for DC

Technical specifications

Ø Pipe ins	Ø Orifice		Flow factor		Δp maximum		Weight		Maximum temperature		Catalog N°.	
	mm	ins.	Kv	Cv	bar	psi	kg	Lb	°C	°F	Brass	Nickel plated
Normally closed												
1/4"	8	0.31	1.80	2.1	4	60	0.83	1.8	180	356	1393BS082	1393NS082
3/8"			2.80	3.28			0.75	1.7			1393BS083	1393NS083
1/2"			2.80	3.28			0.77	1.7			1393BS084	1393NS084
Normally open												
1/4"	8	0.31	1.80	2.1	4	60	0.83	1.8	180	356	1393BS082NA	1393NS082NA
3/8"			2.80	3.28			0.75	1.7			1393BS083NA	1393NS083NA
1/2"			2.80	3.28			0.77	1.7			1393BS084NA	1393NS084NA

General dimensions 1393



ØA	B	C	D	E	F	G	H
R 1/4"	54	25	104	73	38	25	68
R 3/8"							
R 1/2"							

Measurements: mm

ØA	B	C	D	E	F	G	H
R 1/4"	2.13	0.98	4.09	2.87	1.50	0.98	2.68
R 3/8"							
R 1/2"							

Measurements: ins.

Coil characteristics

Electric power supply	Coil type	Power W	VA (volt-ampere)		Maximum temperature		Available tensions
			Inrush	Holding	°C	°F	
AC 50 Hz	M20H	20	66	33	180	356	1
AC 60 Hz	M20H	20	66	33	180	356	2

1 - (12, 24, 110, 220, 240) V 2 - (12, 24, 110, 120, 220, 240) V

Options	Prefix	Suffix	Examples
Weather proof housing	Y		Y1393BS802
Explosion and weather proof housing	Z		Z1393BS802
NPT connections		T	1393BS802T

Recommendations for installation

Place a strainer upstream the valve with a porosity ≤ 100µ.

Mount **only** over horizontal pipeline with the coil upright.